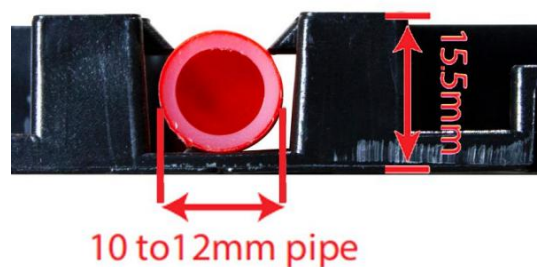
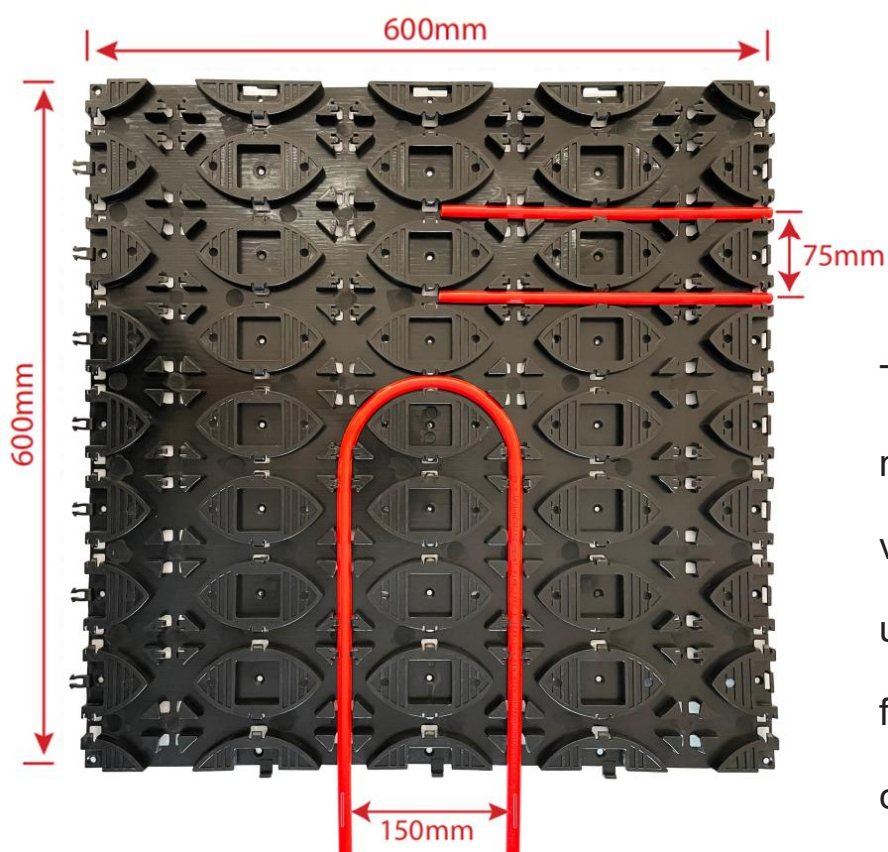


Lowfix 12 Panel Datasheet

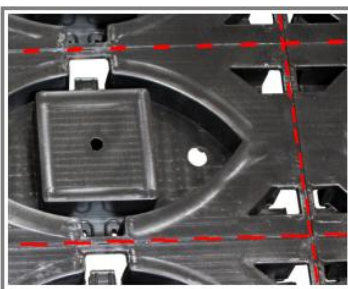


The Panel is a revolutionary pipe retention system, which provides a very quick to install and simple to use solution for a wide range of floor heating, wall heating or ceiling cooling applications.

Features and Benefits



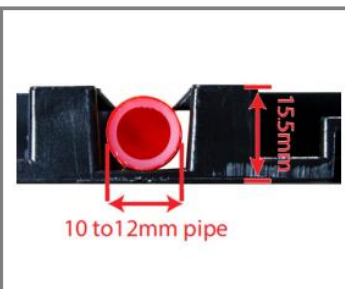
"PURPOSE DESIGNED SUPPORTS" to provide a structural key for tile adhesive and low profile screeds.



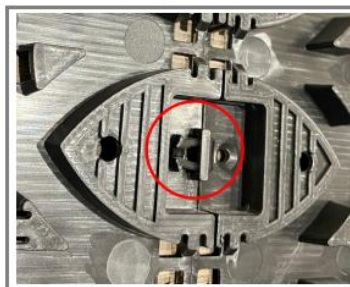
Multiple "BREAK POINTS" with V shaped notches to aid cutting knife alignment.



Multiple "PIPE RETENTION CLIPS" to secure the pipe in place.



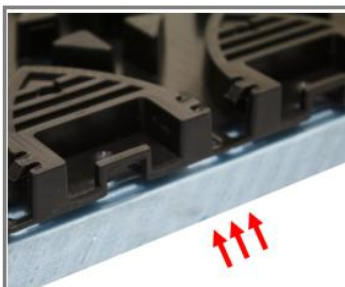
"ULTRA LOW PROFILE" for 10 to 12mm pipe.



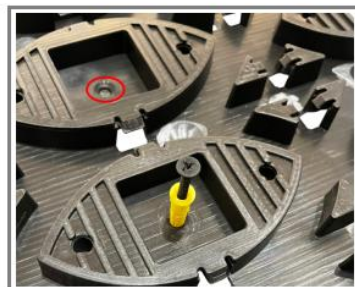
"SNAP CLIPS" to fasten the panels together.



"SLIDE AND LOCK FEATURE" to connect the panels together.



Optional "HIGH COMPRESSIVE STRENGTH INSULATION LAYER".



"MECHANICAL FIXING POINT" within every eye.

Heat Outputs

		MEAN WATER TEMPERATURE									
		30°C		35°C		40°C		45°C		50°C	
SYSTEM TYPE	FLOOR COVERING	Heat Output W/m ²	Floor Surface Temp °C	Heat Output W/m ²	Floor Surface Temp °C	Heat Output W/m ²	Floor Surface Temp °C	Heat Output W/m ²	Floor Surface Temp °C	Heat Output W/m ²	Floor Surface Temp °C
Lowfix 12 Panel	Tile	56.50	25.22	84.91	27.85	113.21	30.50	141.60	33.12	169.85	36.70
	Vinyl or 6mm Laminate	40.10	23.61	60.33	25.60	80.44	27.47	100.59	29.33	120.74	30.50
	Carpet & Underlay (1.5 TOG)	30.00	22.79	45.00	24.18	60.00	25.55	75.00	26.91	90.00	28.53

* for guidance only (all systems must conform to BS EN1264)